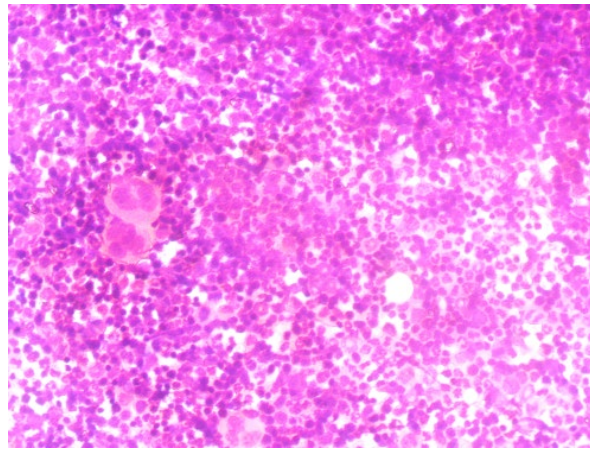
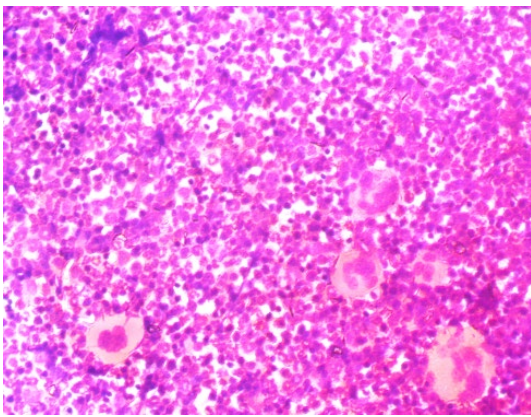


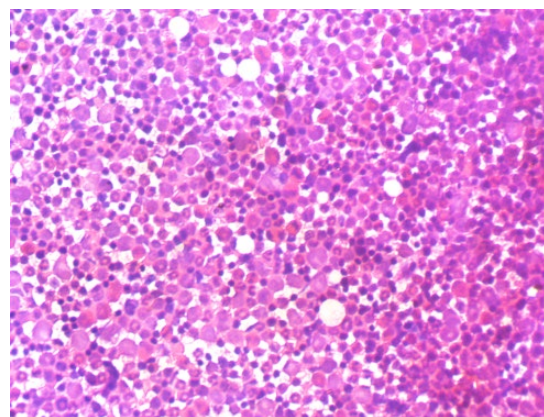
A1



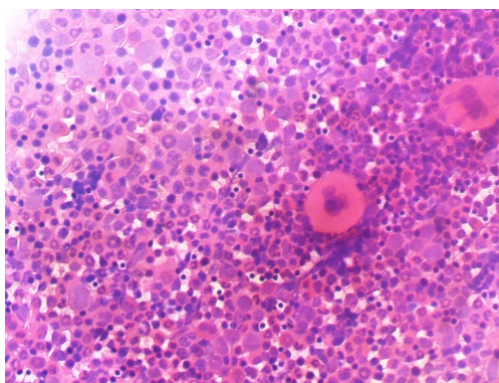
A2



A3



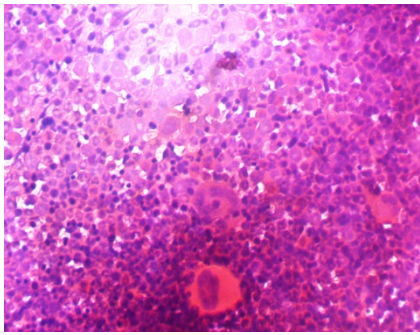
A4



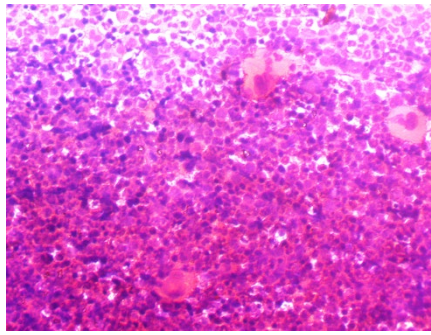
A5

Figure S1. Negative controls (A1-A5):

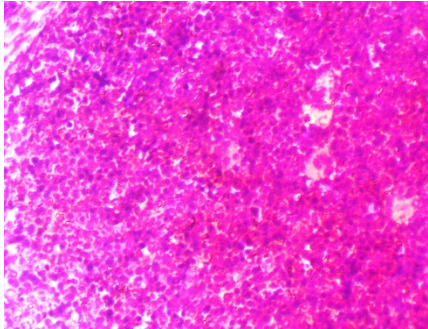
Smear showed normal cellularity and active tri-lineage haematopoiesis.



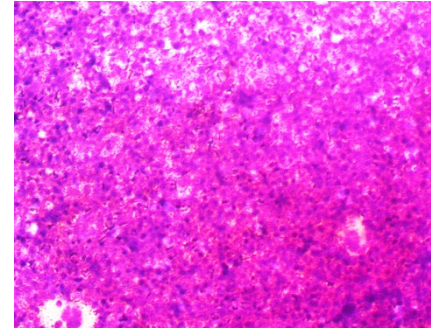
B1



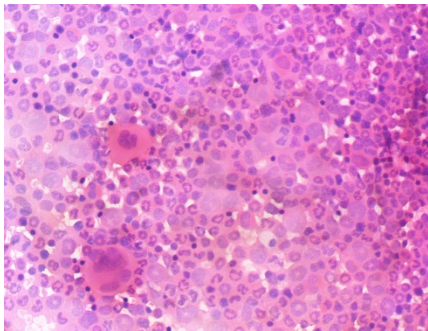
B2



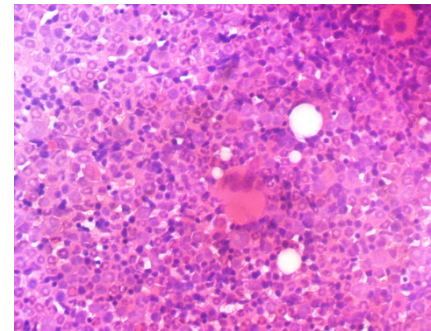
B3



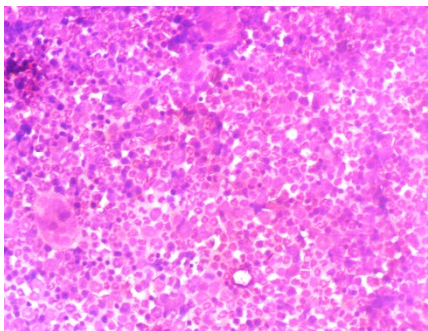
B4



B5

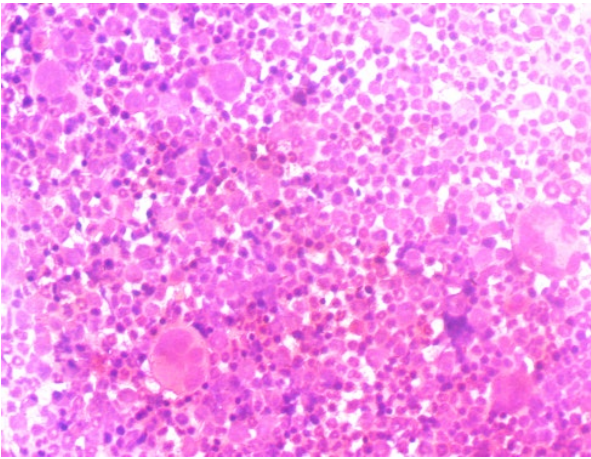


B6

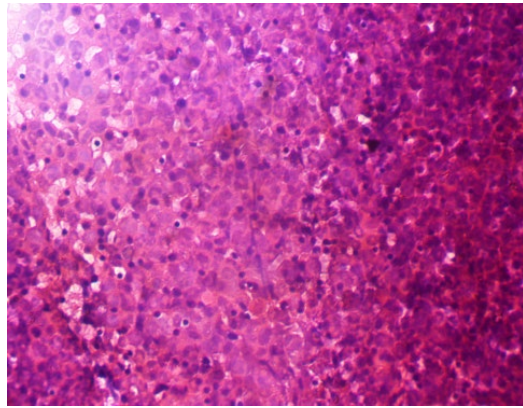


B7

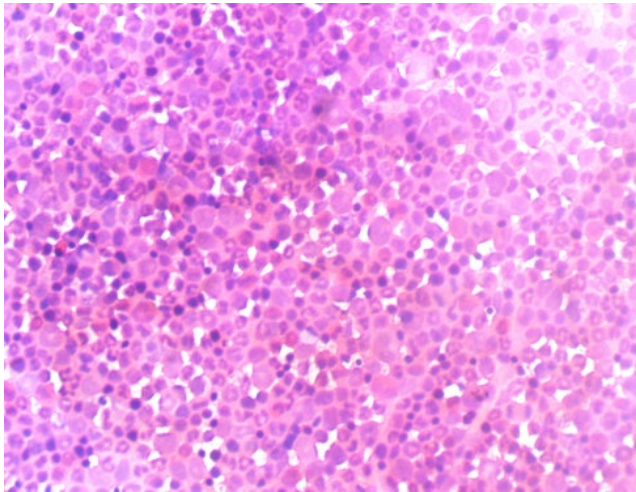
Figure S2. Positive control (B1-B7): Smear showed hyper cellularity with increased megakaryocytes, myeloid cells, and erythrocytes, and reduction in marrow fats when compared to the negative control.



C1



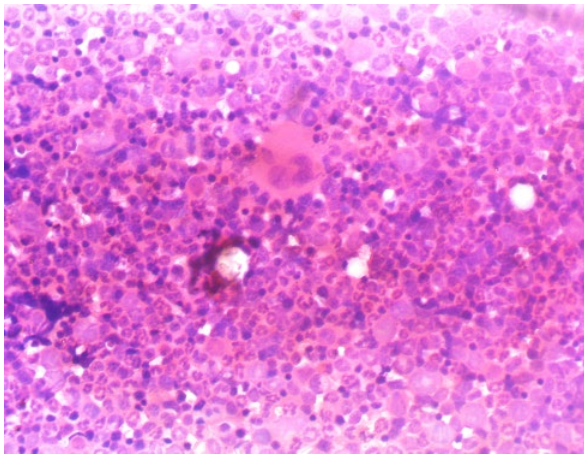
C2



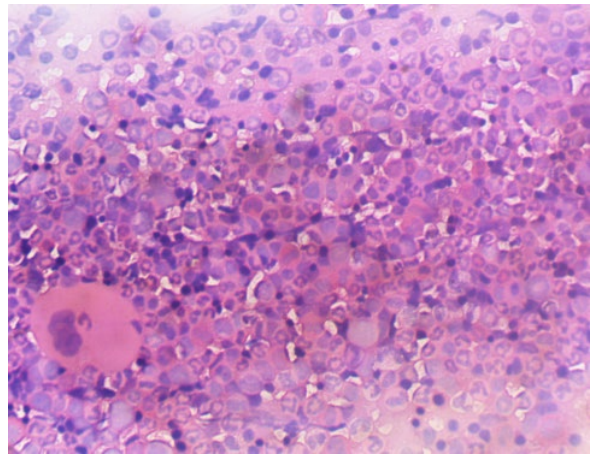
C3

Figure S3. Test groups (C1-C3):

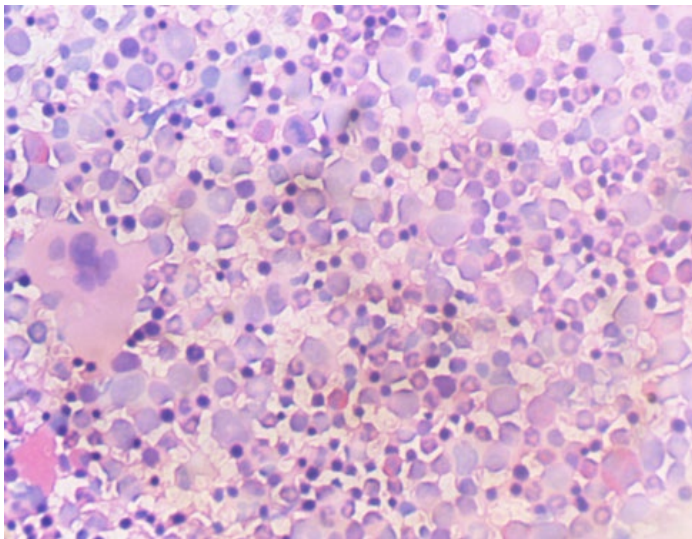
Temperate cellularity with myeloid repression, with elevated juvenile megakaryocytes and myeloid cells in the bone marrow, were observed, and a decrease in marrow fats as compared to the control.



D1



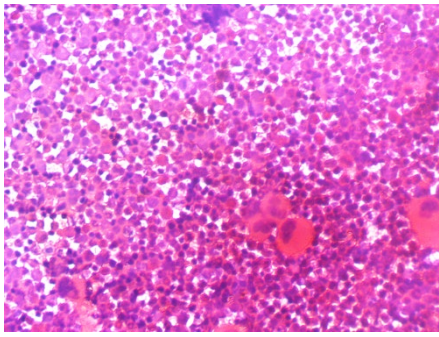
D2



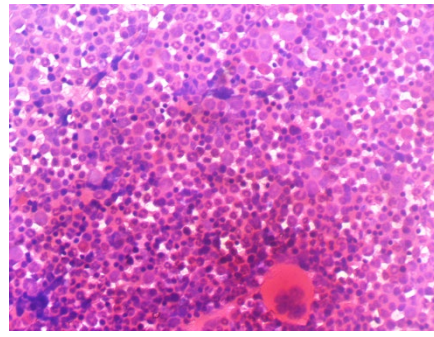
D3

Figure S4. Test groups (D1-D3):

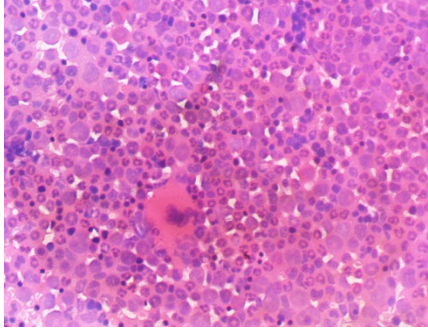
Temperate cellularity with myeloid repression, with elevated juvenile megakaryocytes and myeloid cells in the bone marrow, were observed, and a decrease in marrow fats as compared to the control.



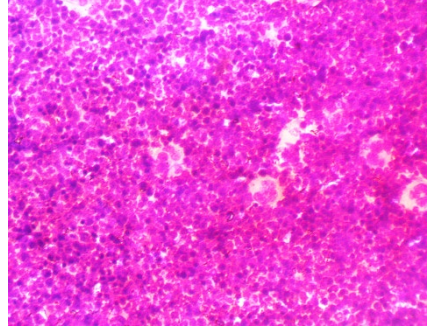
E1



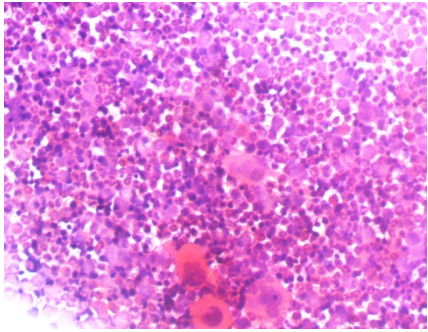
E2



E3



E4

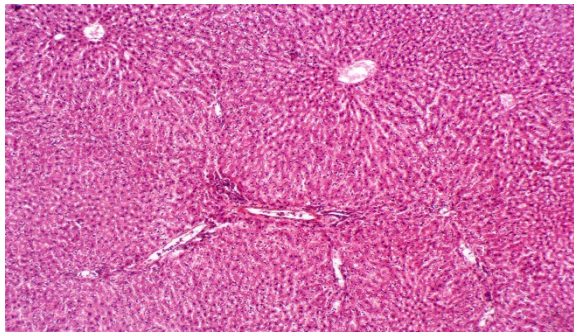


E5

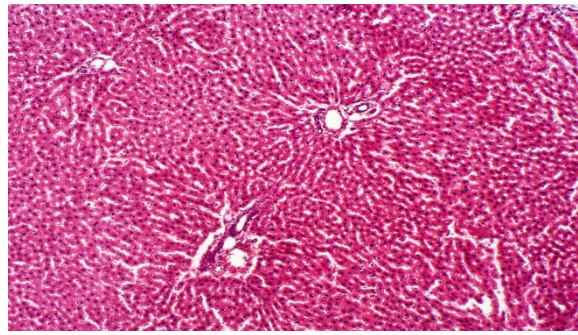
Figure S5. Test groups (E1-E5):

Temperate cellularity with myeloid repression, with elevated juvenile megakaryocytes and myeloid cells in the bone marrow, were observed, and a decrease in marrow fats as compared to the control.

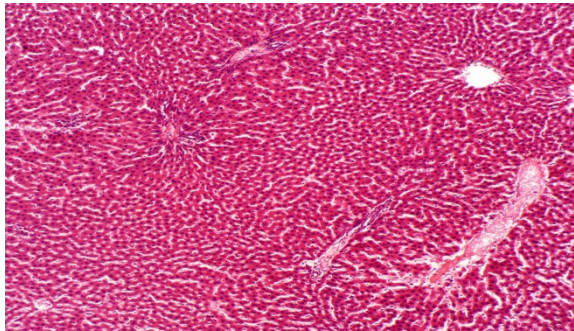
Descriptive analysis of liver both test and control



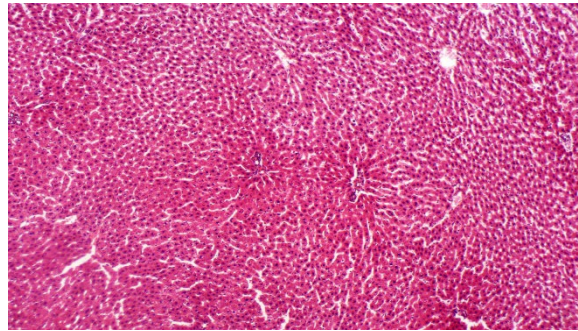
A1



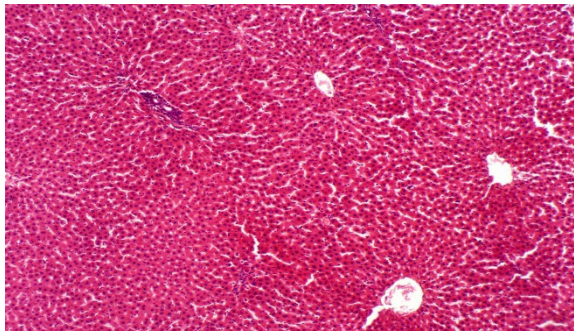
A2



A3



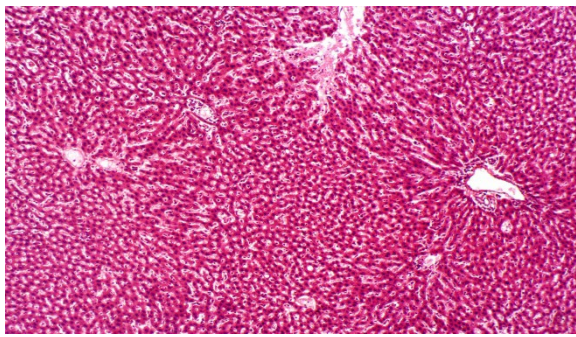
A4



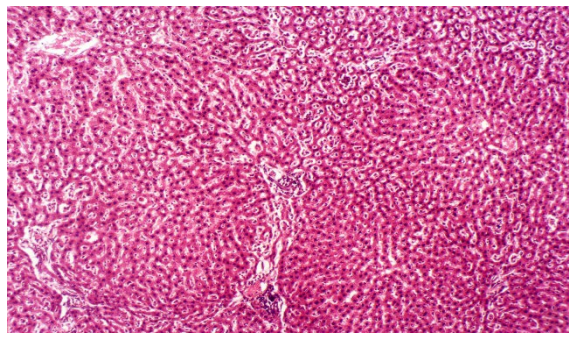
A5

Figure S6. Negative control (A1-A5):

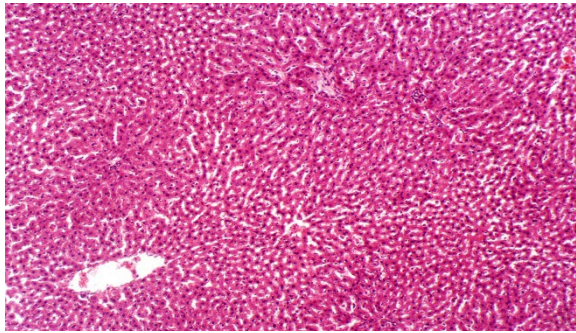
It is well preserved; the hepatocyte and portal tract are normal and the lymphocyte infiltration is minimal. There was no acute or chronic damage.



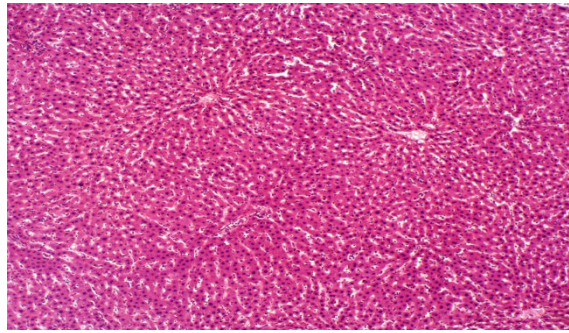
B1



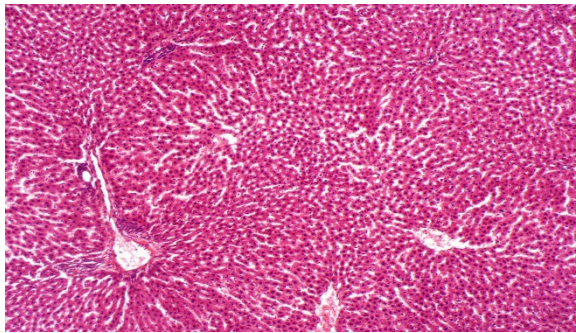
B2



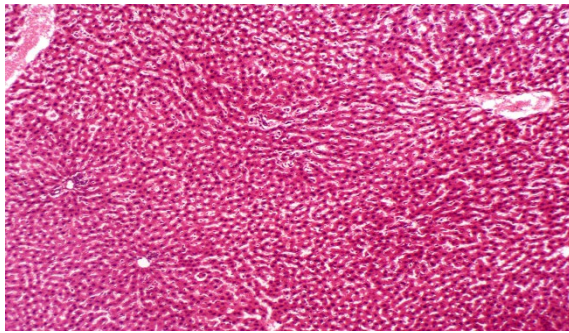
B3



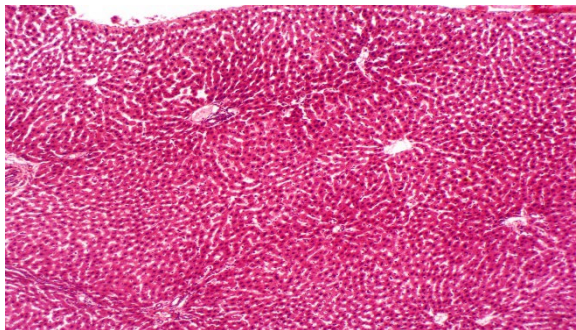
B4



B5



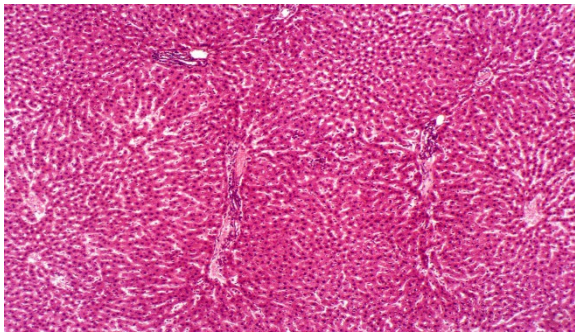
B6



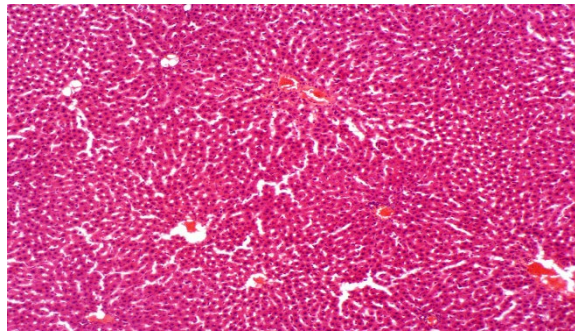
B7

Figure S7. Positive control (B1-B7):

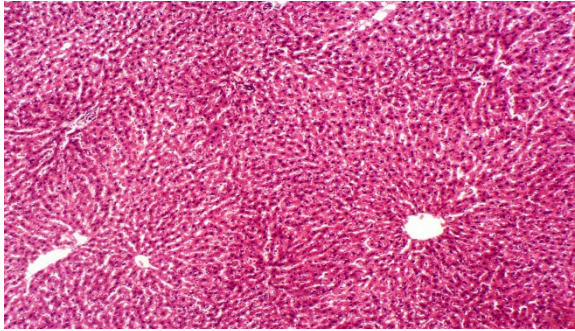
It is well preserved; the hepatocyte and portal tract are inflamed and the lymphocyte infiltration is minimal. The sinusoids were extensively dilated. There was no acute or chronic damage.



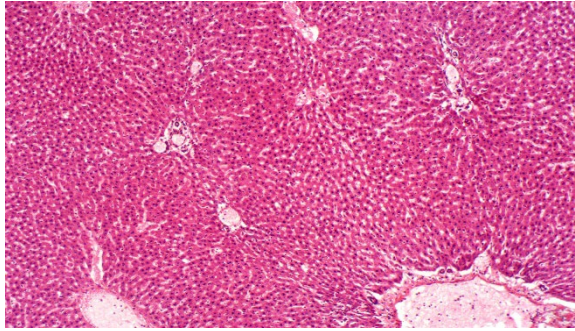
C1



C2



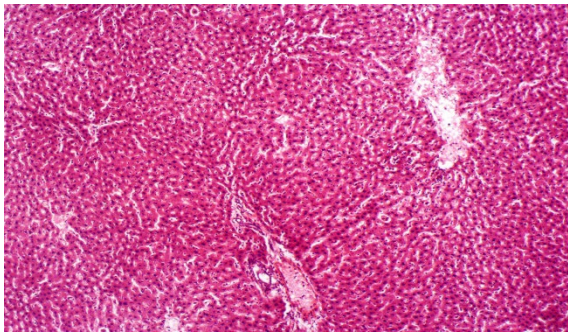
C3



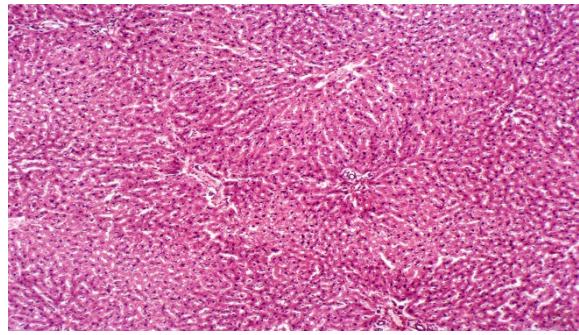
C4

Figure S8. Test groups (C1-C7):

It is well preserved; the hepatocyte and portal tract are normal and the lymphocyte infiltration is minimal, the lobular inflammation was at focal area of lobular inflammation. There was no acute or chronic damage.



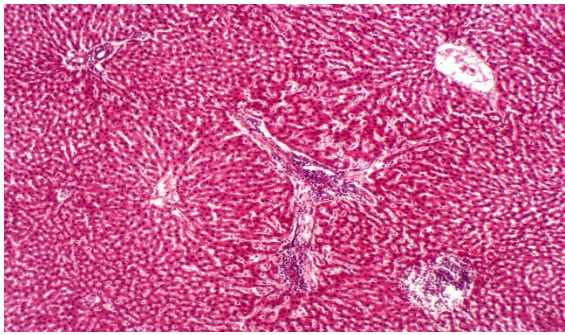
D1



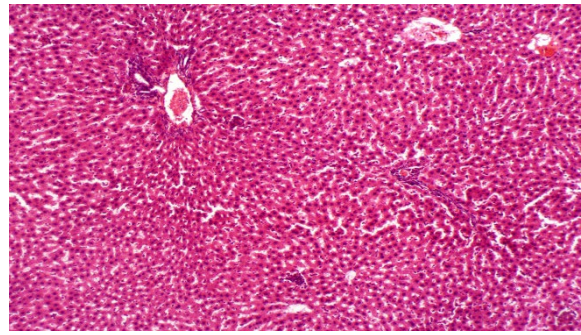
D2

Figure S9. Test groups (D1-D2):

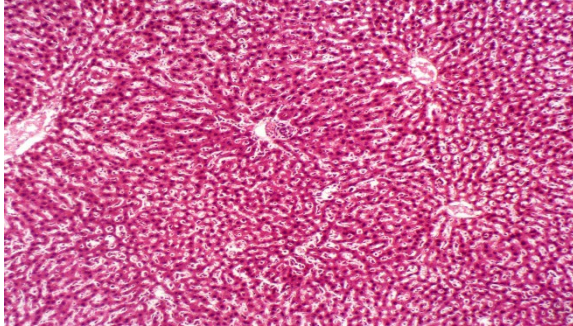
It is well preserved; the hepatocyte and portal tract are normal and the lymphocyte infiltration is minimal, the lobular inflammation was at focal area of lobular inflammation. There was no acute or chronic damage.



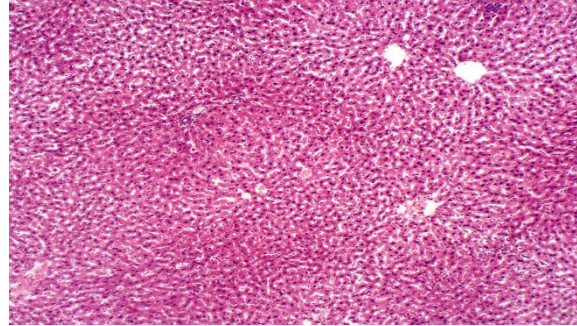
E1



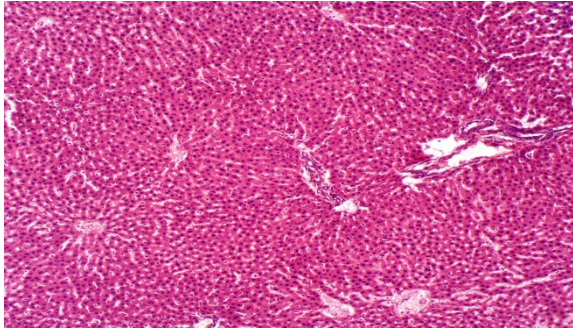
E2



E3



E4



E5

Figure S10. Test groups (E1-E5):

It is well preserved; the hepatocyte and portal tract are normal and the lymphocyte infiltration is minimal, the lobular inflammation was at focal area of lobular inflammation. There was no acute or chronic damage.